

Finally,
A High Quality
Generic TGR

ShortStop®

Tree Growth Regulator



You get everything you've come to expect
from a tree growth regulator

- same growth control & benefits
 - same percent of active ingredient; Paclobutrazol

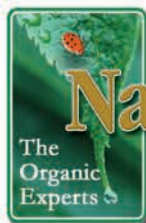
With ShortStop®, you'll get even more

- much lower price
 - better application rates
 - higher percent purity of active ingredient
 - more refined & uniform
resulting in less residue & better distribution

No other TGR has all these features *and* cost less,
making ShortStop® the smart choice!

ShortStop® Tree Growth Regulator
is now being sold at an incredible price.

(800) 645-6464



Nature's Pro®
Bio-Soil Science

Montgomeryville, PA 18936
www.naturespro.com

Application Methods for **ShortStop® Tree Growth Regulator**

Which Type of Application Method is Best for you?

Two Types of TGR Applications

Basal (Soil) Drench is low cost and good for small jobs.



Basal (Soil) Drench:

The application is made by digging a trench (3" deep x 2-3" wide) around the base of the tree. Carefully pour the calculated volume of RTU into the trench. **IMPORTANT:** the liquid should be *evenly distributed* for effective results. Once the TGR is absorbed into the soil, push the dirt back into the trench firmly. Length of absorption time will vary with soil compaction, available moisture, and soil type/texture (20-45 min. per tree).

Minimum EQUIPMENT: trowel or Cats Claw, tray, graduated cylinder or measuring cup

Soil Injection requires equipment but does any job quickly & easily.



Soil Injection:

Using a soil probe (depth 6"), apply the RTU in a circular pattern around the base of the tree. **IMPORTANT:** injection sites (holes) should be *evenly distributed* for effective results. Each injection site (hole) should have about 200-250 mLs. The pressure should be approximately 80-120 psi but if the soil is very compacted or hard clay, reduce the pressure & make more holes. Timing is less than 7 min. per tree.

Minimum EQUIPMENT: soil probe, flow meter, mixing tank with pressure

Job Estimating for application of **ShortStop® Tree Growth Regulator**

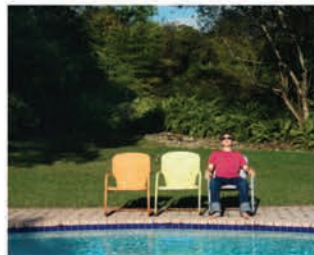
BENEFITS

- Increases energy in the plant.
- Using this product positively impacts root growth for a decade or more.
- Reduce plant stress.
- Reduce disease activity.
- Reduces the size of the stomata on the leaf.
- Increases the thickness of the leaf cutin.

Effective Ways to Use **ShortStop® Tree Growth Regulator** for your Customer Base



**Control the growth
of woody shrubs**



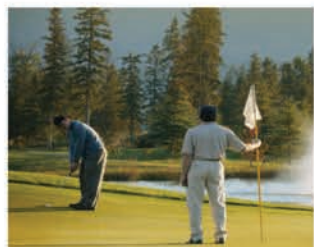
**Control trees that may
shade pools & decks**



**Aids in drought conditions
& girdling roots**



**Helps declining Oaks, and
other large trees**



**Prevent golf course trees
from overgrowing**



**Good alternative for ROW
maintenance**



**Ornamental trees kept
at desired size**



**Treat trees before
construction damage**



**Slows the growth of
crowded landscapes**



**Reduces chlorosis
in many trees**



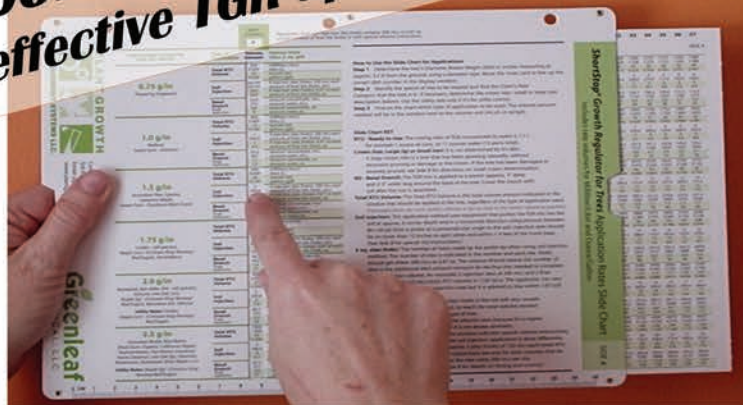
**Enhance fine root hair
growth in trees**



**Controlling plants on
commercial properties**

ShortStop® Tree Growth Regulator

Arborist Materials
for effective TGR applications



TGR Slide Charts
\$12 each (includes
S&H)

One (1) FREE
with your first
order of 2+ gallons
of ShortStop®

TGR Rate Slide Chart

12 tree categories for accurate applications

Volumes given in milliliters, Liters, ounces, and gallons

Application instructions and special notes

| Tree Groups | Arborist's Total RTU Volume* |
|---|------------------------------|
| Flowering Dogwood | |
| Redbud, Southern Sweet Gum | |
| Eastern Sweet Gum, American Elm | |
| Japanese Maple, Linden (all sp.), | |
| Common King Norway Red Sugar Maple | |
| Basswood, Box Elder, Elm, Ashes Elm | |
| Common King Norway Red Sugar Maple | |
| Black Gum, Silver Maple (all) | |
| Adonias, Buckeye, Silver Maple (all) | |
| Oak (all), Black Walnut, White, Sweetgum, Box | |
| Catalpa, Honeylocust, and Locust | |
| Brown Black Gum, Elm | |
| Ashes, Black (all sp.), Box, Cherry | |
| Californian (all), Red Cedar, Sycamore | |
| Elm, Crab, Blackberry, American, Russian | |
| Magnolia, Mulberry, Shagbark Elm, Ash | |

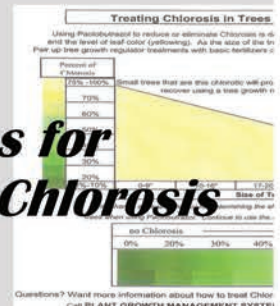
Job Estimating Worksheets

Shrub Rates & Instructions

Basal Drench & Soil Injection Guides



Steps for Treating Chlorosis



Nature's Pro, LLC | (800) 645-6464
www.naturespro.com